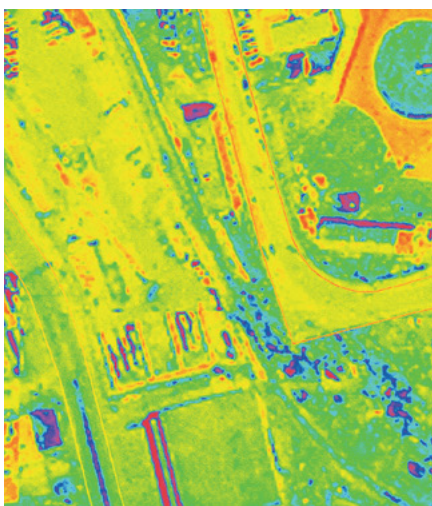
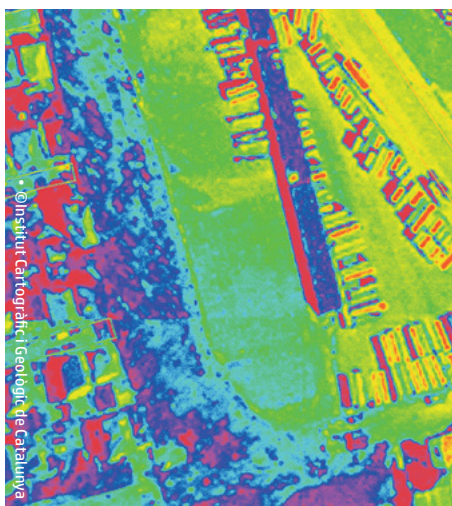
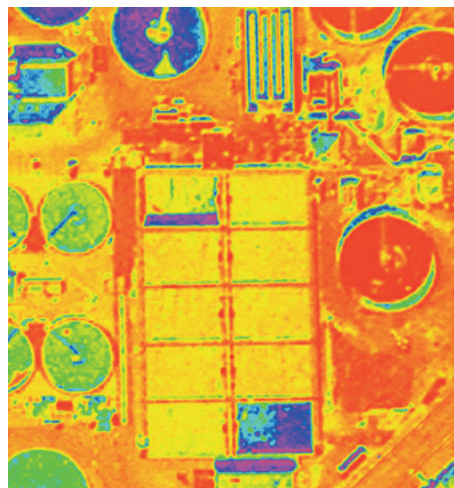
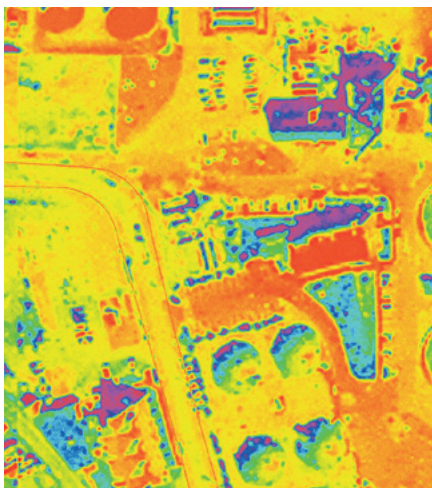
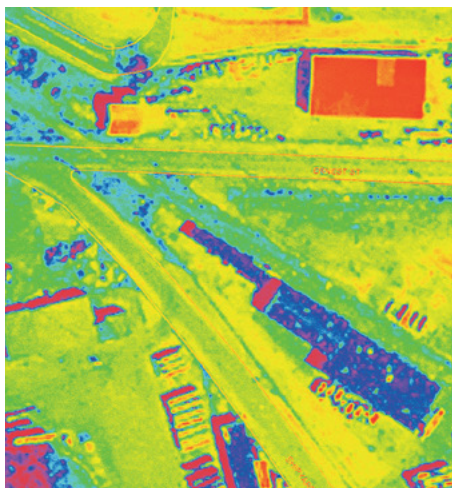
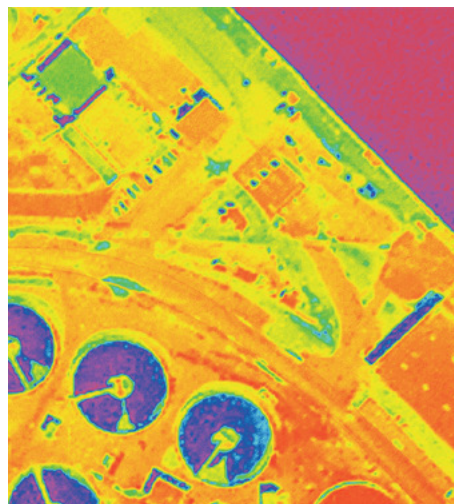
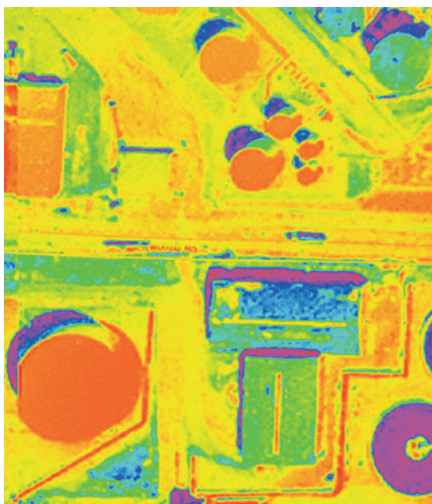
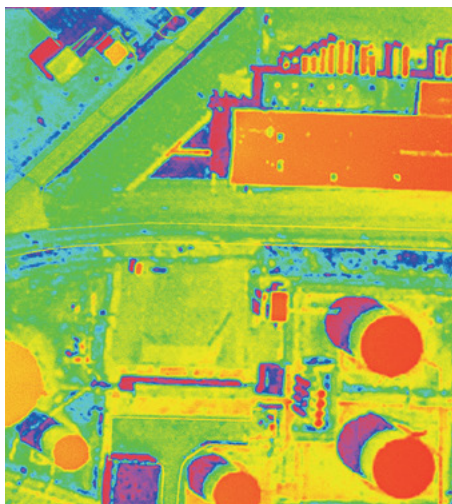


Brochure

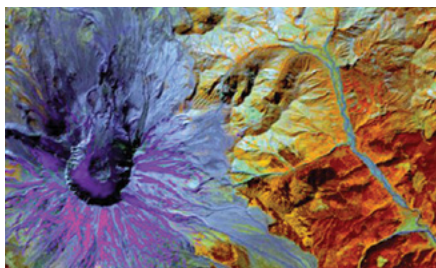
HP DesignJet printing solutions for GIS

Produce drawings, satellite and aerial photos, maps, and plans that communicate clearly with excellent image and line quality



Choose the HP DesignJet printer or multi-function printer that is right for you

For land, demographic, and natural resource cartography, photogrammetric engineering, and remote sensing



Common applications

- Satellite/aerial photos
- Color data representations
- Mapping and diagrams
- Natural resource and topography plans
- Geospatial data and graphics
- Territory scale studies



Best fit: HP DesignJet Z-series printers

Communicate more effectively and easily document your projects by printing large-format drawings and maps, as well as satellite and aerial photos. The HP DesignJet Z-series printers support a wide variety of applications and deliver durable in-door prints with original HP Ink and HP Media .

For large work groups with high production volumes

For small and medium work groups



HP DesignJet Z6800 Photo Production Printer and HP DesignJet Z6600 Production Printer 60 inches (1524 mm)

With HP Double Swatch Technology and the HP Optical Media Advance Sensor to create quality prints at top speed. Choose between 8 or 6 Original HP Vivid Photo Inks¹.

HP DesignJet Z6200 Photo Production Printer 42 inches (1067 mm)

With 8 Original HP Vivid Photo Inks and embedded spectrophotometer that guarantee unrivaled print quality²

HP DesignJet Z5400 PostScript® Printer 44 inches (1118 mm)

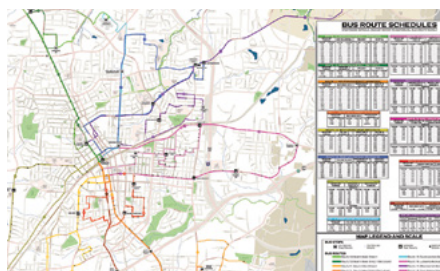
With 6 Original HP Vivid Photo Inks (Pigment Based Ink), broad media versatility ,embedded Postscript for color accuracy and web connectivity features.

hp.com/go/DesignJetZ6800
hp.com/go/DesignJetZ6600

hp.com/go/DesignJetZ6200

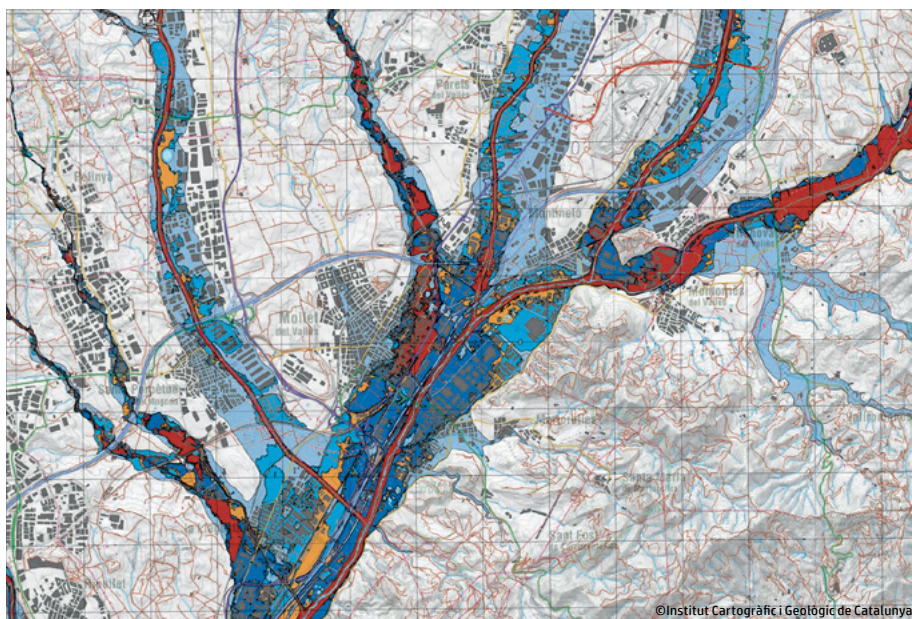
hp.com/go/DesignJetZ5400

For mapping, utility systems, telecom, and infrastructure planning



Common applications

- Urban, localized scale studies
- Maps
- Grayscale and black-and-white line drawings and graphics
- Project schedules
- Color line and layer overlays
- Project presentations



Best fit: HP DesignJet T-series printers

Take advantage of fast speeds and high file-processing capabilities that boost your office productivity.

For large teams with high production needs

44-inch requirements for small and medium workgroups with high printing volumes



HP DesignJet T7200 Production Printer

42 inches (1067 mm)

Print up to 1,968 ft (600 m) uninterrupted with high-capacity HP ink cartridges and using different types of media on its three heavy rolls.



HP DesignJet T1300 PostScript® Printer

44 inches (1118 mm)

Fast and reliable, web-connected PostScript® Printer. 6 Original HP inks (Dye-Based Ink). Print on different paper types and sizes seamlessly—and save time—using two rolls with smart switching.



HP DesignJet T795 Printer

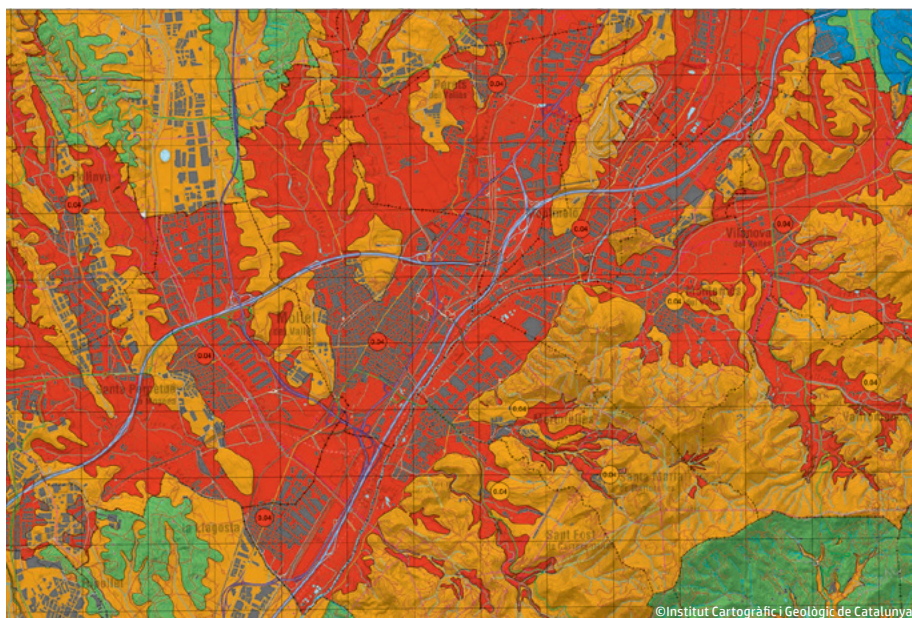
44 inches (1118 mm)

High-quality, web-connected Printer. 6 Original HP Inks (Dye-Based Ink).

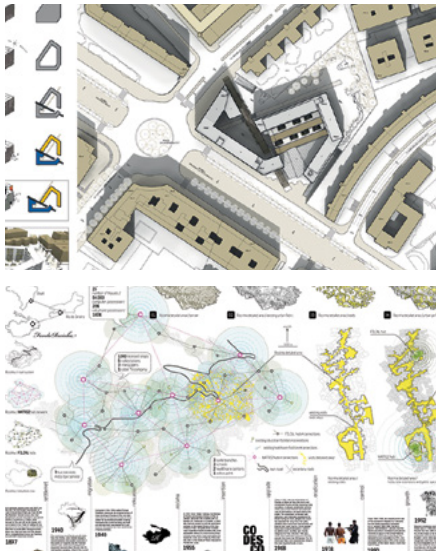
hp.com/go/DesignJetT7200

hp.com/go/DesignJetT1300

hp.com/go/DesignJetT795

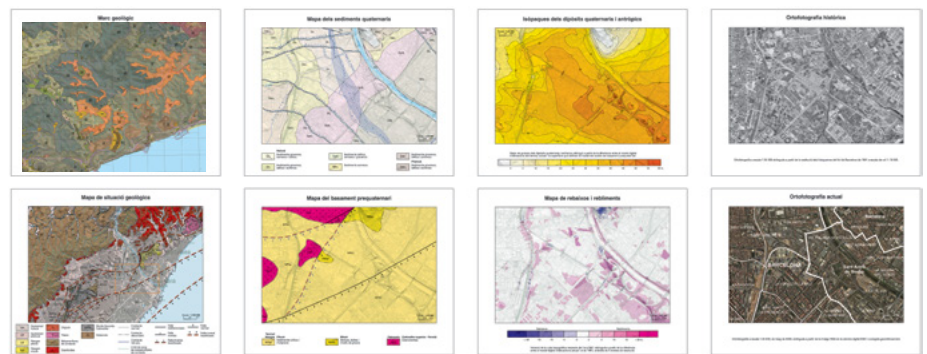


For business, geo-marketing, and land planning GIS



Common applications

- Localized area studies
- Project localization visualization
- City and urban planning
- Geo-marketing and engineering studies graphics and maps
- Grayscale base plans with color line and image highlights



©Institut Cartogràfic i Geològic de Catalunya

Best fit: HP DesignJet T-series printers

HP DesignJet printers are specially designed to meet your team's needs and adapt to any work environment. You can produce a high volume of prints with accurate colors and crisp line definition while you save time and money from outsourcing. Short printer processing time—even with large and complex files. Improve your workflow and remote team-work by integrating the web-connected capabilities that HP DesignJet technical portfolio offer to keep your information up to date—even when you're on the road.

For scan and copy needs



HP DesignJet T3500 Multifunction Printer series

36 inches (914 mm)

Deliver prints neatly collated with the integrated stacker and switch rolls easily with true front loading supporting up to two heavy rolls (650 ft/200 m). Safeguard private information—including output protected by a personal PIN.

For demanding workteams



HP DesignJet T930 and T1530 Printer series

36 inches (914 mm)

Excellent printing quality and speed, unparalleled ease of use, and web connectivity in one-or-two-roll.

For small studios



HP DesignJet T520 Printer series

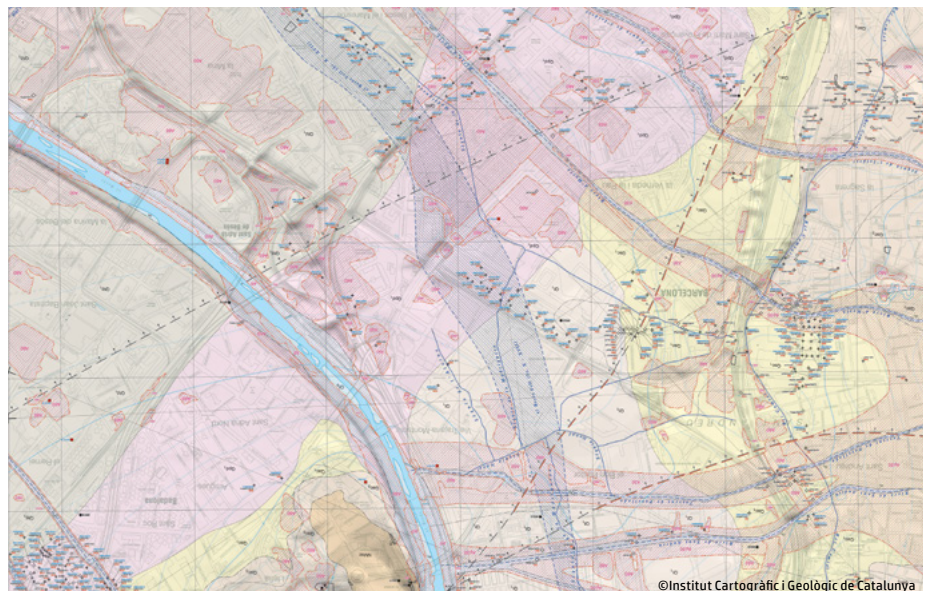
24 and 36 inches (610 and 914 mm)

This compact tray and roll web-connected printer offers exceptional print speeds, accurate color quality for all your documents, maps and photos.

hp.com/go/DesignJetT3500

hp.com/go/DesignJetT930
hp.com/go/DesignJetT1530

hp.com/go/DesignJetT520



©Institut Cartogràfic i Geològic de Catalunya

Build a complete HP solution for a streamlined workflow



- Rely on end-to-end assistance along your printing workflow with **HP DesignJet SmartStream**. From job preparation to printing, help increase your productivity with high-speed rendering of technical drawings, maps, and complex PDF files. For more information and printers compatibility visit hp.com/go/DesignJetSmartStream.
- Add new scan and copy functions to your current workflow with **HP DesignJet Pro Scanners**. This efficient print-copy-scan solution is specially designed for GIS professionals who value high-definition scanning, copying, and image enhancement with precise color accuracy. Perfect to capture large format maps, satellite imagery, ortho photos, and color and black-and-white graphics with high-speed, outstanding definition, and ready to print or share in a collaborative environment using features like scan to email, network printing and much more. For product details and HP DesignJet Printers compatibility visit, hp.com/go/DesignJetSDProScanner and hp.com/go/DesignJetHDProScanner.
- Print unattended runs during business hours—and even overnight—with the **HP DesignJet Stacker**.³ It collects up to 500 D- or A1-sized plots and automatically flattens them, keeping them organized until they can be collected.
- Simplify and speed up your printing experience with the HP DesignJet **Postscript®/PDF Upgrade kit**. Process complex files; support PostScript®, PDF, TIFF, and JPEG files; and create emulations of PANTONE colors. The upgrade kit also supports HP Instant Printing Pro, which streamlines printing from beginning to end.
- Control costs with the **HP Accounting Tool**. Remotely track ink and media use and associated costs with automatic reports and advanced accounting options with the free HP accounting tool available for selected models.⁴
- Accelerate geospatial applications with **HP Workstations**. HP Workstations deliver the I/O, memory, processing, and visualization performance you need to accelerate your work with large data sets and geospatial software applications in both desktop and mobile systems. Better still, they offer added assurance that comes from rigorous system testing with key software applications and a full three-year warranty.

Original HP inks and HP Large Format Printing Materials

Whether your GIS project calls for dye-based or pigment/UV-based inks, HP has a quality solution for you. Use Original HP inks and HP print-heads to experience consistent high quality and reliable performance that enables less downtime. For more information, visit hp.com/go/DesignJetOriginalHPInks and for the entire HP Large Format Printing Materials portfolio, please see HPLFMedia.com.

HP Alliances

HP works closely with leading design application companies to deliver a range of dynamic workflow solutions.



Eco Highlights

- Free, convenient HP ink cartridge and printhead recycling¹
- Works with FSC®- and PEFC™-certified HP papers²
- Range of recyclable HP media with a take-back program¹
- ENERGY STAR® qualified printers
- ENERGY STAR® qualified and EPEAT Bronze registered³

¹ Program availability varies. Please check hp.com/recycle for details.

² BMG trademark license code FSC®-C115319, see fsc.org. HP trademark license code FSC®-C017543, see fsc.org. BMG trademark license code PEFC™/29-31-261, see pefc.org. HP trademark license code PEFC™/29-31-198, see pefc.org. Not all FSC®- or PEFC™-certified products are available in all regions. For information about HP large format printing materials, please visit HPLFMedia.com.

³ EPEAT registered where applicable and/or supported. See epeat.net for registration status by country.

Please recycle large-format printing hardware and printing supplies.

Find out how at our website

hp.com/ecosolutions



¹ Display permanence rating for interior displays/away from direct sunlight by HP Image Permanence Lab, and by Wilhelm Imaging Research, Inc. on a range of HP media and based on HP Vivid Photo inks. For more information, see HPLFMedia.com.

² Available on HP DesignJet Technical Printers. Requires an HP DesignJet Print & Share account, Internet connection to the printer, and connected Internet capable device. When using the HP DesignJet Print & Share mobile app, a compatible Apple® iOS or Android™ device and Internet connection are required. Data or connection charges may apply. Print times may vary. 5 GB of temporary storage per account.

³ Stacker only available for HP DesignJet T7200 Printer series.

⁴ Check your printers' website for HP Accounting Tool Compatibility.



“Getting drawings to our teams on site on time is absolutely vital. Any delay can mean wasted time and money. The HP DesignJet Z5400ps Printer is just so much faster and easier to work with.”

—Samuel Murray, highways projects civil engineer at Amey.

Public Sector GIS firms rely on HP DesignJet Printers to produce the large format plans and designs needed

Amey, UK

Amey improves its production times by upgrading to HP DesignJet printers

A leading as public service provider in the UK, Amey works with public and regulated sector customers to help create better places to live, work and travel. Amey chose the HP DesignJet Z5400 PostScript® Printer for its ability to print A0/A1-size photo quality in-house posters, photos and signs and deliver project-critical engineering drawings for the 90 designers that use the printer at the office or remotely.

Challenges

- Team of 90 designers demand productive and smooth workflow with minimal user intervention.
- Achieve photo quality output for posters, presentations, indoor signs and banners.
- Print superior quality A0/A1 engineering drawings. Fast processing and printing of even the most complex files on the office network, local USB drives and from remote locations.

Solution

- HP DesignJet 44-in Z5400 PostScript® Printer with multi-roll capacity offering interruption-free, smart media switching for photo-quality graphics and accurate engineering drawings.
- Six-ink system with 300 ml high-capacity cartridges, that include three shades of black HP Photo Inks, for unattended, accurate drawings and more efficient ink usage.
- HP Instant Printing PRO for productivity-enhancing print job management.
- HP Large Format Printing materials for posters, presentations and banners that ensure high quality in every print.

Results

- High photo-quality prints for posters, wall decorations, indoor health and safety signs and event banners.
- A0/A1-size engineering drawings with sharper, neutral grey lines produced in under a minute, dry off the printer, are ready for construction site deadlines and customer meetings.
- Dual-roll capacity gives uninterrupted productivity for graphics and engineering drawings output, saving hours in a week and hundreds of meters of media in months.
- HP Instant Printing PRO's drag and drop file merging feature creates unique, application-free print jobs on the fly, saving time and optimizing media usage to boost productivity.
- Built-in features such as driverless printing of PostScript® files on a USB key or laptop, front panel previews and file management, speed up productivity and eliminate bottlenecks.
- HP large-format media achieves consistently reliable output for complete peace of mind in high pressure working environments.

Visit us on
hp.com/go/thepowerinyourhandsGIS

 facebook.com/HPdesigners

 twitter.com/hpgraphicarts

 youtube.com/HPGraphicArts

© Copyright 2014-2015 HP Development Company, L.P. The information contained herein is subject to change without notice. The only warranties for HP products and services are set forth in the express warranty statements accompanying such products and services. Nothing herein should be construed as constituting an additional warranty. HP shall not be liable for technical or editorial errors or omissions contained herein.

This product meets ENERGY STAR requirements when appropriate coil components are used. Adobe Systems Incorporated assumes no responsibility or liability for any errors or inaccuracies that may appear in the informational content contained in this content.

4AA5-1664EEW, November 2015, Rev. 2

