

# HP Designjet printing solutions for repro houses, quick printers, and sign shops

Ground-breaking performance that can pay you back fast



## Do and offer more

HP large format printing solutions are easy, flexible, fast, cost-effective, and —best of all —big. They also deliver stunning results that can keep your customers coming back for more. HP's portfolio of Designjet printers, accessories, software and services offer an excellent fit for most repro houses, quick printers, and sign shops —helping satisfy a broad range of printing needs.

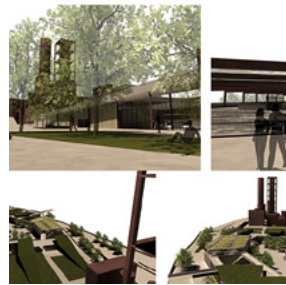
### Expand your offering

If you own a repro house, a quick printer, a photo lab, or a commercial printer, it's time to expand your offering. Start producing a large selection of outputs for your customers — ranging from photographic applications, indoor signage, promotional point of purchase displays as well as event and tradeshow graphics to CAD drawings and renderings typically demanded by design professionals. HP Designjet printing technologies allow you to print easily on a wide variety of substrates while providing consistent color reproduction and high-quality results with every print.



#### Line Drawings

Print anything from simple CAD drawings to complex color documents with high speed and outstanding image quality. Bring the customer's vision to life with drawings full of fine detail, enabled by precise line accuracy.



#### Renderings, Posters, and Presentations

Print large-format drawings, schematics, renderings, and presentations with great ease, speed, clear and vibrant quality, and low running costs.



#### Maps and Orthophotos

Help clients communicate clearly with excellent image and line quality on all their prints from drawings to satellite and aerial photos, maps, and more.



#### Retail POP/POS

Help your customers create appealing advertising posters, displays, window graphics, and backlits that can influence their shoppers' decisions. Deliver high-quality printing on a wide variety of media (coated, photo, polypropylene, vinyl, etc.) that works to gain a competitive edge.



#### Exhibition and Event Graphics

Produce prints that grab attention at exhibitions and events with eye-catching top-quality graphics. Print a wide variety of applications, from roll-up and pop-up banners to backlit signs and posters with superior print quality—and meet your customers' many needs.



#### Professional Photography and Digital Fine Art

Produce dazzling fine art reproductions for galleries and artists with high-quality digital printing. Long lifespan and fade resistance keep prints in top viewing condition on a range of printing materials from canvas to high-end professional photo and fine art papers.<sup>1</sup>

## For repro houses



Print high-quality color plans and renderings at a low cost. Enjoy high-speed unattended printing and offer more application options to your AEC and GIS customers. Replace your mono LED and aging color printer with a single HP device that's also easy to upgrade because of its modular design. Experience easy color calibration and profiling with complete coverage of SWOP, ISO, GRACOL, 3DAP, EUROSCALE, TOYO, and FOGRA gamuts. Meet all your black-and-white and color needs with reliable HP Designjet printing, copying, scanning, and document management solutions for high-volume printing. Redefine "productivity" and deliver low total cost of ownership.

### To meet your education, business, AEC and GIS customer requests you might require

- Large memory capacity for printing sets of plans in high-volumes both quickly and unattended
- Faster turnaround times
- Full solution integration with HP and HP Certified third-party accessories, software and services
- Low-cost production
- Quick ROI
- IT integration
- Web connectivity to attend to and deliver remote jobs
- Print multiple jobs on a variety of media types and sizes with two (or three) rolls and smart switching
- Crisp, accurate renderings; professional images on photo paper; and presentations
- Broad media support to increase your application offering

### Most common applications

- AEC and GIS plans and line drawings
- Color renderings and images
- GIS graphics

### Best fit: HP Designjet T-series

Boost your reprographic business by choosing an HP technical printer with integrated scanner or a production workhorse for large volume requirements. Choose from a wide variety of HP and 3rd party accessories, software and services to complete your printing solutions and start offering your customers more than they ask for.

#### For mid- to large-sized repro houses with high-production requirements



#### HP Designjet T7200 Production Printer

42 inches (1067 mm)

Boost productivity and meet all black-and-white and color needs with a versatile, high-speed production printer that offers a low cost of ownership. Confidently manage PDFs with HP Designjet SmartStream, and easily control your printing workflow. Print up to 1,968 ft (600 m) uninterrupted with high-capacity HP ink cartridges and using different types of media on its three heavy rolls.

#### For small- and mid-sized repro houses that require large-format integrated scanning, copying and printing



#### HP Designjet T3500 Production eMFP

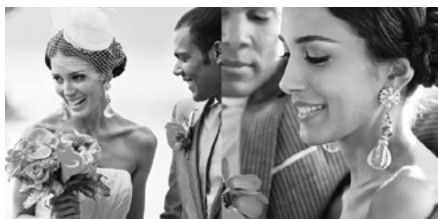
36 inches (914 mm)

Quickly print, copy, and scan from one device—and deliver complex jobs rapidly thanks to ultra-fast file processing. Efficient workflow tools, like preference presets help keep jobs moving. Deliver prints neatly collated with the integrated stacker and switch rolls easily with true front loading supporting up to two heavy rolls (650 ft/200 m). This MFP's solid design is built for high-volume operation. Control costs with compatible accounting tools, integrate to your IT environment and easily manage projects and minimize costs using HP Web Jetadmin and the HP Designjet Universal Print Driver. Safeguard private information—including output protected by a personal PIN.

[hp.com/go/DesignjetT7200](http://hp.com/go/DesignjetT7200)

[hp.com/go/DesignjetT3500](http://hp.com/go/DesignjetT3500)

## For small and medium quick printers and sign shops



Expand your capabilities and start offering customers more. Impress them with vibrant color and exceptional image quality to help grow your business.

**If you own a local quick printers, sign shop, or walk-in business that receives on-demand orders for miscellaneous jobs or retail applications, consider expanding your application reach to accommodate more of your customers' requests**

- Offer a wide range of applications so you can avoid saying “No” to new job requests
- Lower the cost of production to boost your margins
- Simplify and speed up the printing process to enable faster turnarounds
- Speed up your ROI
- Full solution integration with HP and 3rd party accessories, software and services

**Print a wider variety of applications with HP Designjet solutions**

- On-demand miscellaneous jobs
- Posters
- Backlit prints
- Photos
- Canvas and home décor applications
- Business POP and retail applications
- Banners
- Small signage
- Pricing signs and menus

### Best fit: HP Designjet Z-series

Offer outstanding quality color applications while keeping costs low

**For significant workflow improvements, with two rolls and smart switching**



**HP Designjet Z5400  
PostScript® ePrinter**  
44 inches (1118 mm)

With two rolls and automatic media switching, the HP Designjet Z5400 PostScript® ePrinter keeps your operations ultra-efficient. Impress your customers with high-quality, durable results. There's no limit to what you can create: POS posters, photos, canvases, backlit prints, indoor signs, line drawings, and maps.

**For high-quality color requirements in 44-inch wide format**



**HP Designjet Z5200 Photo  
Printer**  
44 inches (1118 mm)

Print any file your customers bring you. Add high-margin large-format prints to your offering and see your business grow. This 44-inch PostScript® Printer with 8 Original HP Photo Inks revolutionizes your workflow by enabling a highly intuitive and productive printing experience.

**Affordable 8-ink, 24 inches printer to produce durable prints**



**HP Designjet Z2100 Photo  
Printer**  
24 and 44 inch (610 and 1118 mm)

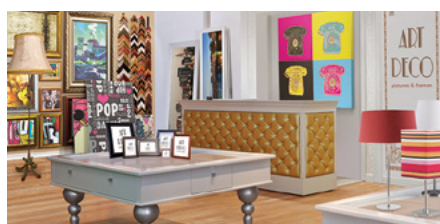
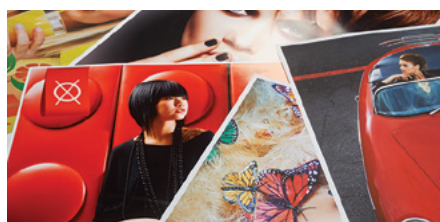
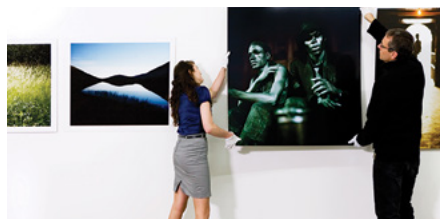
Produce vivid, high-quality color and black-and-white prints that impress your customers. Save time with borderless printing by using photo paper and fast-drying Original HP Photo Inks. Generate custom ICC profiles and achieve color accuracy, consistency with the embedded spectrophotometer. Optimize performance, ink usage—automatic servicing routines, help prevent nozzle clogging and reduce media waste.

[hp.com/go/DesignjetZ5400](http://hp.com/go/DesignjetZ5400)

[hp.com/go/DesignjetZ5200](http://hp.com/go/DesignjetZ5200)

[hp.com/go/DesignjetZ2100](http://hp.com/go/DesignjetZ2100)

## For medium and large quick printers and sign shops



Differentiate and grow your business by offering your customers premium signage prints and a wide range of applications to choose from, including backlit signs, POP displays, roll-up banners, and canvases. Achieve unrivaled print quality and low cost of operation. Speed up your printing workflow today with the fastest photo production printers. Build a full printing solution for your business with HP and 3rd party accessories, software and services.

**Use HP's high-quality photo printers to enhance your color jobs and color proofing of larger applications—and to ultimately boost your competitive advantage. Meet the needs of your existing customers and capture new accounts by offering**

- Best quality prints
- Premium professional color
- Faster turnaround times, without trading off quality
- Speed, quality, and improved workflow efficiencies to help grow volumes and improve competitiveness
- Color proofing for larger print volumes

### Applications

- Advertising graphics
- Premium posters with high-quality images and photos
- Canvas and home décor applications
- Gallery quality premium pieces and fine art applications
- Medium-sized business POP and retail applications
- Banners
- Premium signage applications
- Color proofing

### Best fit: HP Designjet Z-series

For medium and large quick printers and sign shops

## For medium and large quick printers and sign shops looking for fast printing speeds and premium color production in 42 and 60 inches



**HP Designjet Z6800 Photo Production Printer**  
60 inches (1523 mm)

Fastest in its class<sup>2</sup> and high processing power help cut turnaround times. Confidently print unattended with large ink cartridges and a take-up reel. Offer vibrant colors with 8 Original HP Vivid Photo Inks and embedded spectrophotometer enabling a wide color gamut, and color consistency. Three shades of black HP ink produce outstanding optical density and smooth transitions.



**HP Designjet Z6600 Photo Production Printer**  
60 inches (1523 mm)

Boost productivity to meet customer demands. The fastest 60-inch graphics production printer<sup>2</sup> delivers high-quality prints in color and black-and-white. Enjoy efficient operation with 6 Original HP Vivid Photo Inks. Rely on strong performance and easy operation.



**HP Designjet Z6200 Photo Production Printer**  
42 inches (1067 mm)

Performance above your expectations. With 8 Original HP Vivid Photo Inks and embedded spectrophotometer and the fastest printing speeds in its class, you can be sure to get quick results—while achieving the highest quality.

## HP Solutions for Technical and Graphics Production

HP offers a complete portfolio of solutions to help you optimize your CAD and graphics color production departments. You can choose an HP Designjet large format printer that incorporates features designed to manage pay-per-use customers or facility management contracts at customer sites. HP also offers you the technology to transform your document management solutions or online plan request sites into a profitable web printing business.

### Build the configuration that best fits your needs

Starting with the HP Designjet printer required by your printing volume needs you can apply many different configurations that will improve your workflow.<sup>3</sup>

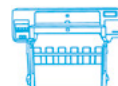
#### HP Designjet Printers



HP Designjet Graphic Printers (HP Designjet Z6800, Z6600, Z6200, Z5400, Z5200, Z3100 Printers)



HP Designjet T3500 Production eMFP



HP Designjet T7200 Production Printer



Only for HP Designjet T7200 Production Printer



Third roll upgrade kit<sup>5</sup>

#### Software



HP SmartStream<sup>4</sup>  
HP Instant Printing Pro



HP Designjet PostScript®/PDF Upgrade Kit



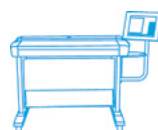
HP Designjet Accounting Tool



HP Certified RIP Solutions GMG, ONYX, PosterJet, SAi, and SCP

#### HP certified partner solutions

#### HP Accessories



HP Designjet HD Pro Scanner



HP Designjet Stacker



Compatible third-party folders (GERA or ES-TE)

#### HP certified accessory

## HP accessories, software and solutions

**HP Designjet SmartStream.**<sup>4</sup> Rely on end-to-end assistance along your printing workflow. From job preparation to printing, manage your printing fleet by viewing all available printers in one screen and help increase your productivity with high-speed rendering of technical drawings, maps, and complex PDF files. For more information and printers compatibility visit [hp.com/go/DesignjetSmartStream](http://hp.com/go/DesignjetSmartStream)

**HP Instant Printing PRO.** Simplify the large-format print workflow with tools that set print parameters, prepare files for printing, and more—useful when processing complex files. For more information and printers compatibility visit [hp.com/go/HPInstantPrintingPro](http://hp.com/go/HPInstantPrintingPro)

**HP Designjet PostScript®/PDF Upgrade Kit.** Simplify and speed up your printing experience with the HP Designjet PostScript®/PDF Upgrade kit. You can process complex files, support PostScript®, PDF, TIFF, and JPEG files, and create emulations of PANTONE® colors. The upgrade kit supports HP Instant Printing Pro, which streamlines printing from beginning to end. Check your printer's technical specifications for compatibility.

**HP Designjet Accounting Tool.** Build efficient accounting, facility management, and onsite services with HP certified accounting solutions for HP Designjet printers. Take advantage of advanced accounting features, remotely track ink and media use to help monitor costs on a print-by-print basis. Printers can automatically send usage reports via email that you can manage through a free Microsoft® Excel template provided by HP. For more information and printers compatibility visit [hp.com/go/Designjet/Accounting](http://hp.com/go/Designjet/Accounting)

**HP Designjet HD Pro Scanner.** Capture images with outstanding color accuracy using this high-speed, high-definition scanner. Enhance images on the large touchscreen, and save documents to many file formats, including multipage PDFs. Scan to email, USB, and other network locations. For more information and printers compatibility visit [hp.com/go/DesignjetHDProScanner](http://hp.com/go/DesignjetHDProScanner)

**HP Designjet Stacker.** Print unattended runs during business hours and even overnight. The HP Designjet 110V Stacker and HP Designjet 220V Stacker collect up to 500 D- or A1-sized plots and automatically flattens them, keeping them organized until they can be gathered.

**HP Designjet Roll Upgrade Kit.**<sup>5</sup> Boost your productivity with an additional roll. You can increase your capacity to up to three rolls with the HP Designjet Roll Upgrade Kit. The easy-to-install roll supports a broad range of media, and it integrates smoothly with the HP Smart Roll Loading System for nearly effortless loading.

## HP certified third-party solutions

The HP Partner Program helps you smoothly integrate application-specific software solutions from industry leaders with full confidence. Third-party solutions that qualify for HP certification have proven compatibility with the specified HP Designjet products

**Compatible third-party folders for AEC & GIS applications (GERA or es-te).** Make easy work of finishing. Prints are taken directly from the printer and fan and cross folded automatically in one pass. No manual intervention is needed at all; and the entire fold work is done with astonishing speed and precision. For more information and printers compatibility, visit [hp.com/go/Designjet3rdparty](http://hp.com/go/Designjet3rdparty)

**Certified third-party RIP solutions for quick printers and sign shops serving graphics markets.** HP has certified a range of third-party Raster Image Processors to enable additional control over elements such as color management, ICC profile management, tiling and nesting, support of multiple printers and optimizing Pantone and spot color. Choose from industry leading solutions such as: Caldera, CGS, ColorGATE, Efi, Ergosoft, GMG, Onyx, SAi and Shiraz. For more information and printers compatibility, visit [hp.com/go/DesignjetRIPs](http://hp.com/go/DesignjetRIPs)

**Certified third-party production workflows for repro houses serving AEC & GIS markets (OpCenter or SCP).** HP partners with these leading software vendors to provide you with advanced color, workflow, and reprographic management tools. For more information and printers compatibility, visit [hp.com/go/Designjet3rdparty](http://hp.com/go/Designjet3rdparty)



## Original HP Inks and Large Format Printing Materials

Whether your project calls for dye-based or pigment/UV-based inks, HP has a quality solution for you. The unique chemistry between Original HP Designjet inks and HP large format printing materials makes exceptional results possible, from uniform fills to crisp text and sharp lines. Use Original HP inks and HP print-heads to experience consistent high quality and reliable performance that enables less downtime. These critical components are designed and engineered together as an optimized printing system with HP Designjet printers. For more information, visit [hp.com/go/DesignjetOriginalHPInks](http://hp.com/go/DesignjetOriginalHPInks). For the entire HP Large Format Printing Materials portfolio, please see [HPLFMedia.com](http://HPLFMedia.com).

## Protect your data with HP Designjet printers

While high print quality, performance and reliability have always been key attributes of HP Designjet printers, data protection is equally important. From advanced security measures to compliance and certification assurance, HP Designjet printers provide IT managers at any institution with the peace of mind that all their valuable and sensitive data is properly protected. For more information, contact your HP representative today or visit [hp.com/go/Designjet](http://hp.com/go/Designjet).

## HP Services

HP Designjet Support Services offer solutions that maximize the performance of your HP large format printing solution, while protecting your investment in the technology. Choose from installation and maintenance services or up to 5 year support coverage with warranty experience at no extra costs for the duration of the contract. For more information please visit [hp.com/go/Designjet/Support](http://hp.com/go/Designjet/Support).

<sup>1</sup> Up to 200 years display permanence rating for interior displays/away from direct sunlight, under glass by HP Image Permanence Lab and/or by Wilhelm Imaging Research, Inc. on a range of HP media. See [globalBMG.com/hp/printpermanence](http://globalBMG.com/hp/printpermanence)

<sup>2</sup> Compared to large-format inkjet printers under \$25,000 for graphic applications. Based on the fastest rated color speeds as published by manufacturers as of January 2010 for HP Designjet Z6200 and October 2013 for HP Designjet Z6600 and Z6800 Photo Printers. Test methods vary.

<sup>3</sup> Configuration Suggestions are conceptual and are intended to be used as reference, for compatibility information to each HP Designjet printer please visit our website [hp.com/go/Designjet](http://hp.com/go/Designjet)

<sup>4</sup> Currently available for the HP Designjet T3500 Production eMFP and the HP Designjet T7200 Production Printer.

<sup>5</sup> Currently available for the HP Designjet T7100/T7200 Production Printers.

# Quick printer discovers the value of fast, high-quality large-format printing

“The combination of high-image quality with speed means that we can complete orders quickly and with greater confidence. Customers are seeing us expedite orders in half the time and that helps them move forward too.”

—Brandon Harrop, Art Director, Express Imaging

## Express Imaging, Layton, Utah, US

Express Imaging is a quick printer that offers professional graphic design and printing, shipping services, and packaging to local retail stores, businesses, and walk-in customers. They service a wide range of customers, including construction companies needing black and white line drawings; businesses requiring stationary or promotional posters for tradeshow; a local food chain that demands indoor signage; and walk-in customers with a variety of printing demands.



### Express Imaging increases productivity with the HP Designjet Z5400 PostScript® ePrinter

Express Imaging expanded their application reach with high-quality large-format printing delivered with short turnaround times thanks to their HP Designjet Z5400 PostScript® ePrinter's productivity features such as multi-roll and smart media switching.

Their output volumes increased thanks to the printer's outstanding color and black and white image quality, USB port for walk-in customer USB flash drives, and HP Instant Printing Pro.

Finally, they saw their value-added design services grow exponentially thanks to a higher number of applications offered.

**Watch Express Imaging success story video**  
[hp.com/go/expressimaging](http://hp.com/go/expressimaging)

## Eco Highlights

- Free, convenient HP ink cartridge and printhead recycling<sup>1</sup>
- Works with FSC®- and PEFC™-certified HP papers<sup>2</sup>
- Range of recyclable HP media with a take-back program<sup>1</sup>
- ENERGY STAR® qualified printers

<sup>1</sup> Program availability varies. Please check [hp.com/recycle](http://hp.com/recycle) for details.

<sup>2</sup> BMG trademark license code FSC®-C115319, see [fsc.org](http://fsc.org). HP trademark license code FSC®-C017543, see [fsc.org](http://fsc.org). BMG trademark license code PEFC™/29-31-261, see [pefc.org](http://pefc.org). HP trademark license code PEFC™/29-31-198, see [pefc.org](http://pefc.org). Not all FSC®- or PEFC™-certified products are available in all regions. For information about HP large format printing materials, please visit [globalBMG.com/hp](http://globalBMG.com/hp).

Please recycle large-format printing hardware and printing supplies.

Find out how at our website  
[hp.com/ecosolutions](http://hp.com/ecosolutions)



**Learn more at**  
[hp.com/go/Designjet](http://hp.com/go/Designjet)

© Copyright 2014-2015 Hewlett-Packard Development Company, L.P. The information contained herein is subject to change without notice. The only warranties for HP products and services are set forth in the express warranty statements accompanying such products and services. Nothing herein should be construed as constituting an additional warranty. HP shall not be liable for technical or editorial errors or omissions contained herein.

Adobe, PostScript®, and Adobe PostScript® 3 are trademarks of Adobe Systems Incorporated. ENERGY STAR and the ENERGY STAR mark are registered U.S. marks. Intel and the Intel Inside logo are trademarks of Intel Corporation in the U.S. and other countries. Microsoft is a U.S. registered trademark of the Microsoft group of companies. Mac and the Mac logo are trademarks of Apple Computer, Inc., registered in the U.S. and other countries. PANTONE is the property of Pantone, Inc.

4AA5-1665EEW, February 2015, Rev 1.

