

Brochure

# HP Designjet printing solutions for GIS

Produce drawings, satellite and aerial photos, maps, and plans that communicate clearly with excellent image and line quality



# HP Designjet printers —keeping pace with GIS demands

GIS imaging has come a long way in a short time. And it continues to evolve. File sizes have grown exponentially as images have become more intricate, complex, and rich in color. All through this evolution, the printed output has remained the most reliable solution for documenting projects.



## Quality you can count on

Produce uncompromised, true-to-life image quality with sharp, crisp lines and outstanding color consistency for the most detailed jobs. Choose from Original HP dye inks or Original HP pigment-based inks for greater display permanence and water resistance.

## Affordable printing on demand

Keep clients updated on all phases of the project via printed visuals. Print sets of plans without compromising your budget. Input last minute changes and print them on the go, delivering the most up-to-date plans to the project or client site.

## Broad application reach

The HP Designjet printing portfolio offers something for every firm, with a range of printers, ePrinters, and eMultifunction Printers that support multiple applications. Take advantage of broad media support to enhance your project plans and visual presentations.

## Low environmental footprint

HP Designjet printers use water-based inks and compliant with HP's General Specification for the Environment (GSE) and EU Reduction of Hazardous substances (RoHS) programs. HP Designjet printers are EU WEEE Directive-compliant and up to 90% of their total weight is recyclable content.<sup>1</sup>

## Proven HP Services

HP Designjet Support Services offer solutions for all types of work environments—including installation, extended support, maintenance, and a variety of other value-added services. For more information, please visit [hp.com/go/Designjet/Support](http://hp.com/go/Designjet/Support).

Like most GIS firms, you may be looking to improve operational efficiencies and offer clients more for the same price. HP Designjet printing solutions help you save time and money through improved efficiencies, while delivering the superior image quality and line accuracy that your business demands.



## Paper archives

Affordably maintain up-to-date physical archives printing with durable pigment based inks that guarantee reliable, long lasting archives. Print multiple versions of projects to document all relevant phases. Print archive sets in-house and keep costs low.

## Multifunction capabilities and complete solutions

Devices like the HP Designjet T3500 eMultifunction Printer combines large-format scanning, printing, and copying to help streamline operations. With HP, you also have the freedom to create complete personalized solutions combining HP Designjet printers and scanners with HP Workstations, software, and accessories that integrate smoothly into your existing workflow.

## Improved teamwork

Easily print work-in-progress plans and graphics to foster teamwork and help improve collaboration. Detailed line and color accuracy on large-format prints helps teams visualize large-scale area plans and communicate changes. Use web-connected features to keep your satellite offices abreast of the most recent changes and to access last-minute data anytime, anywhere using your mobile device.

## Confidentiality

Help clients rest easy by keeping their data private and secure, especially when managing confidential information, sensitive imagery, or satellite photos. HP Designjet printers are particularly well suited for being deployed into environments where secure network management, secure data transfer, controlled printer access, and secure data erasure are extremely important.

## Reliability and ease of use

Smart, efficient features enable reliable operation and consistent quality with every print. Save time and minimize waste. Low-maintenance, easy-to-use HP Designjet printers also come with high-capacity Original HP ink cartridges for easy, unattended printing—simply press print and walk away knowing you can get the results you expect to see.

# Choose the HP Designjet printer or multi-function printer that is right for you

## For land, demographic, and natural resource cartography, photogrammetric engineering, and remote sensing



### Print the big picture and everything in between

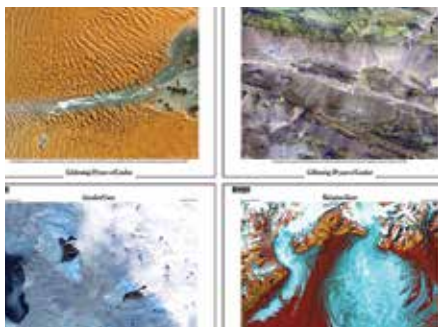
Communicate more effectively with large-format drawings, maps, as well as satellite and aerial photos that demonstrate excellent image and line quality. Present, visualize, or make team-work revisions on your projects. HP Designjet Z-series printers are fast, accurate, and easy-to-use, enabling teams to print work exactly as it's visualized on screen and all without leaving the office.

#### Key needs

- Print accurate graphics, satellite pictures, and maps at high speed
- Control your prints in-house and keep your customers' data private and secure
- Print durable plans that last up to 200 years for archive and project documentation, using pigment based Original HP Vivid Photo Inks<sup>3</sup>
- Save time and money spent on outsourcing prints and presentations by printing in-house at best quality

#### Common applications

- Satellite/aerial photos
- Color data representations
- Mapping and diagrams
- Natural resource and topography plans
- Geospatial data and graphics
- Territory scale studies







### Best fit: HP Designjet Z-series printers

Produce color accurate prints for even the most demanding graphics and plans. The HP Designjet Z-series printers support a wide variety of applications and deliver durable prints.

#### For large offices with high production volumes

#### For small and medium offices



			
<b>HP Designjet Z6800 and Z6600 Photo Production Printers</b> 60 inches (1524 mm) Fastest 60-in graphics production printer with unrivaled print quality <sup>2</sup> . Available in 8 or 6 Original HP Vivid Photo Inks	<b>HP Designjet Z6200 Photo Production Printer</b> 42 inches (1067 mm) Fastest 42-in graphics production printer with unrivaled print quality <sup>4</sup>	<b>HP Designjet Z5400 PostScript® ePrinter</b> 44 inches (1118 mm) The first multi-roll ePrinter for graphics to produce high-quality, long-lasting prints efficiently	
<ul style="list-style-type: none"> <li>• 775-ml ink cartridge capacity</li> <li>• 64 GB (virtual) memory, 320 GB hard disk<sup>3</sup></li> <li>• 8 or 6 Original HP Vivid Photo Inks—pigment-based inks with 3 shades of black and exceptional display permanence<sup>4</sup></li> <li>• Breakthrough color accuracy and consistency (increased by embedded spectrophotometer in Z6800)</li> <li>• HP Embedded Web Server</li> <li>• Built-in take-up reel</li> <li>• High file-processing power</li> </ul>	<ul style="list-style-type: none"> <li>• 775-ml ink cartridge capacity</li> <li>• 32 GB (virtual) memory, 160 GB hard disk<sup>3</sup></li> <li>• 8 Original HP Vivid Photo Inks—pigment-based inks with 3 shades of black and exceptional display permanence<sup>4</sup></li> <li>• Breakthrough color accuracy and consistency with embedded spectrophotometer</li> <li>• HP Embedded Web Server</li> </ul>		<ul style="list-style-type: none"> <li>• 300-ml ink cartridge capacity</li> <li>• 64 GB (virtual) memory, 320 GB hard disk<sup>3</sup></li> <li>• 6 Original HP Vivid Photo Inks—pigment-based inks with 3 shades of black and exceptional display permanence<sup>4</sup></li> <li>• HP Embedded Web Server</li> <li>• Dual roll with automatic media switching</li> </ul>

[hp.com/go/DesignjetZ6800](http://hp.com/go/DesignjetZ6800)  
[hp.com/go/DesignjetZ6600](http://hp.com/go/DesignjetZ6600)

[hp.com/go/DesignjetZ6200](http://hp.com/go/DesignjetZ6200) [hp.com/go/DesignjetZ5400](http://hp.com/go/DesignjetZ5400)



## For mapping: utilities, systems, telecom, and infrastructure planning



HP Designjet printers help improve your workflow and remote team-working by offering web-connected features, allowing you to easily print remotely, share with team members, and keep information up to date—even when you're on the road. Choose the HP Designjet printer that best fits your environment and work team needs. Our web-connected HP Designjet T-series printers, in particular, enable you to:

- Produce prints with accurate line drawings and vector plans with crisp line definition
- Control information and improve teamwork with on-demand printing capabilities
- Print plans in-house and in high volumes, saving time and money
- Keep work teams up-to-date by documenting the most recent changes
- Quickly update project information with remote printing capabilities (in web-connected printers) while you are out of the office

### Key needs

- Short printer processing time—even with large and complex files
- Accurate, consistent color
- High-quality accurate lines, graphics, and renders
- Affordable prints
- Unattended printing
- Fast speeds

- Mobile and remote printing capabilities

### Common applications

- Urban, localized scale studies
- Maps
- Grayscale and black-and-white line drawings and graphics
- Project schedules
- Color line and layer overlays
- Project presentations

### Best fit: HP Designjet T-series printers

Quickly produce great results with crisp lines and detailed drawings, no matter how complex the project. Take advantage of fast speeds and high file-processing capabilities.

#### For large teams with high production needs

#### 44-inch requirements for small and medium workgroups with high printing volumes



#### HP Designjet T7200 Production Printer

42 inches (1067 mm)  
Proven color production solution with low cost ownership

- 64 GB (virtual), 320 GB hard disk. Based on 1 GB RAM (Expandable to 1.5 GB RAM included only in the HP Designjet PostScript/PDF Upgrade Kit accessory)
- 6 Original HP inks and 3 HP printheads
- Print resolution up to 2400 x 1200 optimized dpi
- Maximum print speed 123.3 m<sup>2</sup>/hr (1320 ft<sup>2</sup>/hr)<sup>5</sup>
- Line drawings: up to 15.5 sec/page on A1/D, 165 A1/D prints per hour
- Color images up to 17.5 sec/page on A1/D or up to 117.5 m<sup>2</sup>/hr (1265 ft<sup>2</sup>/hr) on coated media
- Gigabit Ethernet (1000Base-T), EIO Jetdirect accessory slot
- Two rolls (upgradeable to three)



#### HP Designjet T1300 PostScript® ePrinter

44 inches (1118 mm)  
Fast and reliable, web-connected PostScript® ePrinter

- Web connectivity<sup>6</sup>
- HP Designjet ePrint & Share<sup>7</sup>
- Up to 28 sec D (A1) prints in Economode<sup>5</sup>
- 32 GB virtual, 160GB hard disk (Based on 640 MB RAM)
- 6 Original HP inks and 3 HP printheads
- Print resolution up to 2400 x 1200 optimized dpi
- Color touchscreen with page preview
- Print directly from USB
- True print preview from the driver
- Gigabit Ethernet (1000Base-T)
- Two rolls



#### HP Designjet T795 ePrinter

44 inches (1118 mm)  
High-quality, web-connected ePrinter

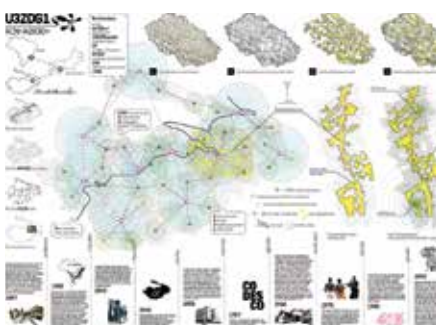
- Web connectivity<sup>6</sup>
- HP Designjet ePrint & Share<sup>7</sup>
- Up to 32 sec D (A1) prints in Economode<sup>5</sup>
- 16 GB (based on 640 MB RAM) memory
- 6 Original HP inks and 3 HP printheads
- Print resolution up to 2400 x 1200 optimized dpi
- Color touchscreen with page preview
- Print directly from USB
- True print preview from the driver

[hp.com/go/DesignjetT7200](http://hp.com/go/DesignjetT7200)

[hp.com/go/DesignjetT1300](http://hp.com/go/DesignjetT1300)

[hp.com/go/DesignjetT795](http://hp.com/go/DesignjetT795)

## For business, geo-marketing, and land planning GIS



**Print business, geo-marketing, and land planning GIS plans and presentations while maintaining the privacy of your customer's data as well as the copyright of your own images.**

Process complex files easily and quickly while also saving time and money. Produce excellent line definition and accurate color renders. Modify and print updated plans for immediate evaluation by team members and clients.

- Experience improved workflows—scan and digitalize large-format photos or area plans with a web-connected eMFP and ePrinters that are fast and easy to use
- Impress your customers with outstanding project presentations for site selection and area studies
- Save time and money for externalized table prints and presentations
- Keep work teams updated by documenting project changes
- Quickly actualize project information using remote printing features in web-connected printers while you are out of the office

### Key needs

- Ability to print a range of applications in different sizes and using different media
- Compact design ideal for small office spaces
- Cost-effective printing for budget-conscious offices
- Mobility and remote unattended printing
- Easy scanning capabilities

### Common applications

- Localized area studies
- Project localization visualization
- City and urban planning
- Geo-marketing and engineering studies graphics and maps
- Grayscale base plans with color line and image highlights

### Best fit: HP Designjet T-series printers

Compact, easy-to-use web-connected printers for high-quality plans and color renders

#### For small studios

#### For demanding workteams

#### For scan and copy needs



**HP Designjet T3500 eMultifunction Printer series**  
36 inches (914 mm)  
Two Roll, web-connected ePrinter with scan and copy capabilities

- Intel Core i5M-260 processor, 128 GB (virtual), 500 GB hard disk (Based on 2.5 GB RAM)
- 600 dpi color scanner
- Scan and copy capabilities
- Web connectivity<sup>6</sup>
- HP Designjet ePrint & Share<sup>6</sup>
- Color touchscreen with page preview
- Print directly from USB
- True print preview from the driver
- Up to 21 sec/page on A1/D, 120 A1/D prints per hour<sup>5</sup>
- Integrated output stacking tray
- 6 Original HP inks
- Gigabit Ethernet (1000Base-T)

[hp.com/go/DesignjetT3500](http://hp.com/go/DesignjetT3500)



**HP Designjet T920 and T1500 ePrinter series**  
36 inches (914 mm)  
Excellent printing quality and speed, unparalleled ease of use, and web connectivity in one-or-two-roll

- 32 GB and 64 GB, (based on 1.5 GB RAM)
- Web connectivity<sup>6</sup>
- HP Designjet ePrint & Share<sup>6</sup>
- Color touchscreen with page preview
- Print directly from USB
- True print preview from the driver
- Up to 21 sec/page<sup>5</sup>
- Integrated output stacking tray
- 6 Original HP inks
- Gigabit Ethernet (1000Base-T)

[hp.com/go/DesignjetT920](http://hp.com/go/DesignjetT920)  
[hp.com/go/DesignjetT1500](http://hp.com/go/DesignjetT1500)



**HP Designjet T520 ePrinter series**  
24 and 36 inches (610 and 914 mm)  
Professional quality plans, maps, and photos with consistent, high-quality results

- 1 GB standard memory
- Web connectivity<sup>6</sup>
- HP Designjet ePrint & Share<sup>6</sup>
- Sheet feed, roll feed, input tray, basket, and automatic cutter
- Gigabit Ethernet (1000Base-T), Hi-Speed USB 2.0, certified Wi-Fi
- Up to 35 sec/page on A1/D, 70 A1/D prints per hour<sup>5</sup>
- Intuitive full-color 4.3-inch (109 mm) touchscreen
- 4 Original HP inks

[hp.com/go/DesignjetT520](http://hp.com/go/DesignjetT520)

## Build a complete HP solution for a streamlined workflow



- Capture images using the **HP Designjet HD Pro Scanner**. This efficient print-copy-scan solution is specially designed for GIS professionals who value high-definition scanning, copying, and image enhancement with precise color accuracy. Perfect to capture large format maps, technical drawings, and photos in color and black-and-white with high-speed, and high-definition
  - Ensure high-quality results without rescans—preview and enhance images on the large touchscreen, and save documents to many file formats, including multipage PDFs. Scan to email, USB, and other network locations.
  - Efficiently handle complex data using an advanced five-camera system that captures images with high precision
  - Accelerate your workflow; save scans as PDF, TIFF, JPEG, or DWF files, and easily create multipage PDFs
- Print unattended runs during business hours—and even overnight—with the **HP Designjet Stacker**.<sup>7</sup> It collects up to 500 D- or A1-sized plots and automatically flattens them, keeping them organized until they can be collected.
- Simplify and speed up your printing experience with the HP Designjet **PostScript®/PDF Upgrade kit**. Process complex files; support PostScript®, PDF, TIFF, and JPEG files; and create emulations of PANTONE colors. The upgrade kit also supports HP Instant Printing Pro, which streamlines printing from beginning to end.
- Control costs with the **HP Accounting Tool**. Remotely track ink and media use and associated costs with automatic reports and advanced accounting options with the free HP accounting tool available for selected models.<sup>8</sup>
- Print from virtually anywhere—your conference room, the job site, or the client site—using **HP Designjet ePrint & Share**. This free web service makes it easy to access, view, and print large-format drawings, maps, images, and plans using your tablet, smartphone, laptop, or even your ePrinter's touchscreen.<sup>6</sup>
- Accelerate geospatial applications with **HP Workstations**. HP Workstations deliver the I/O, memory, processing, and visualization performance you need to accelerate your work with large data sets and geospatial software applications in both desktop and mobile systems. Better still, they offer added assurance that comes from rigorous system testing with key software applications and a full three-year warranty.

### Original HP inks and HP Large Format Printing Materials

Whether your GIS project calls for dye-based or pigment/UV-based inks, HP has a quality solution for you. The unique chemistry between Original HP Designjet inks and HP large format printing materials makes exceptional results possible, from uniform fills to crisp text and sharp lines. Use Original HP inks and HP print-heads to experience consistent high quality and reliable performance that enables less downtime. These critical components are designed and engineered together as an optimized printing system with HP Designjet printers. For more information, visit [hp.com/go/DesignjetOriginalHPInks](http://hp.com/go/DesignjetOriginalHPInks). For the entire HP Large Format Printing Materials portfolio, please see [globalBMG.com/hp](http://globalBMG.com/hp)

<sup>1</sup> HP Designjet printers contain more than 90% recyclable/reusable content by weight. Visit [hp.com/Recycle](http://hp.com/Recycle) to see how to participate and for HP Planet Partners program availability; program may not be available in your area. Where this program is not available, consult the Material Safety Data Sheet (MSDS) available at [hp.com/go/Ecodata](http://hp.com/go/Ecodata) to determine appropriate disposal.

<sup>2</sup> Compared to large-format inkjet printers under \$25,000 for graphic applications. Based on the fastest rated color speeds as published by manufacturers as of January 2010 (for HP Designjet Z6200 Photo Production Printer) and October 2013 (for HP Designjet Z6800 Photo Production Printer and HP Designjet Z6600 Production Printer).

<sup>3</sup> Based on 1 GB RAM. Expandable to 1.5 GB RAM through a Designjet qualified SODIMM included only in the optional HP Designjet PostScript®/PDF Upgrade Kit accessory.

<sup>4</sup> Display permanence rating for interior displays/away from direct sunlight, under glass by HP Image Permanence Lab and/or by Wilhelm Imaging Research, Inc. on a range of HP media. See [globalBMG.com/hp/printpermanence](http://globalBMG.com/hp/printpermanence).

<sup>5</sup> Mechanical printing time. Printed in Fast mode with Economode on, using HP Bright White Inkjet Paper (Bond) with Original HP inks.

<sup>6</sup> Available on HP Designjet Technical Printers. Requires an HP Designjet ePrint & Share account, Internet connection to the printer, and connected Internet capable device. When using the HP Designjet ePrint & Share mobile app, a compatible Apple® iOS or Android™ device and Internet connection are required. Data or connection charges may apply. Print times may vary. 5 GB of temporary storage per account. For more information, visit [hp.com/go/ePrintandShare](http://hp.com/go/ePrintandShare).

<sup>7</sup> Stacker only available for HP Designjet T7200 Printer series.

<sup>8</sup> Check your printers' website for HP Accounting Tool Compatibility.

## Eco Highlights

- Free, convenient HP ink cartridge and printhead recycling<sup>1</sup>
- Works with FSC®- and PEFC™-certified HP papers<sup>2</sup>
- Range of recyclable HP media with a take-back program<sup>1</sup>
- ENERGY STAR® qualified printers
- ENERGY STAR® qualified and EPEAT Bronze registered<sup>3</sup>

<sup>1</sup> Program availability varies. Please check [hp.com/recycle](http://hp.com/recycle) for details.

<sup>2</sup> BMG trademark license code FSC®-C115319, see [fsc.org](http://fsc.org). HP trademark license code FSC®-C017543, see [fsc.org](http://fsc.org). BMG trademark license code PEFC™/29-31-261, see [pefc.org](http://pefc.org). HP trademark license code PEFC™/29-31-198, see [pefc.org](http://pefc.org). Not all FSC®- or PEFC™-certified products are available in all regions. For information about HP large format printing materials, please visit [globalBMG.com/hp](http://globalBMG.com/hp).

<sup>3</sup> EPEAT registered where applicable and/or supported. See [epeat.net](http://epeat.net) for registration status by country.

Please recycle large-format printing hardware and printing supplies.  
Find out how at our website  
[hp.com/ecosolutions](http://hp.com/ecosolutions)



The mark of responsible forestry





# Public Sector GIS firms rely on HP Designjet Printers to produce the large format plans and designs needed

“Getting drawings to our teams on site on time is absolutely vital. Any delay can mean wasted time and money. The HP Designjet Z5400ps ePrinter is just so much faster and easier to work with.”

—Samuel Murray, highways projects civil engineer at Amey.

## Amey, UK

### Amey improves its production times by upgrading to HP Designjet printers

A leading as public service provider in the UK, Amey works with public and regulated sector customers to help create better places to live, work and travel. Amey chose the HP Designjet Z5400 PostScript® ePrinter for its ability to print A0/A1-size photo quality in-house posters, photos and signs and deliver project-critical engineering drawings for the 90 designers that use the printer at the office or remotely.

### Challenges

- Team of 90 designers demand productive and smooth workflow with minimal user intervention.
- Achieve photo quality output for posters, presentations, indoor signs and banners.
- Print superior quality A0/A1 engineering drawings. Fast processing and printing of even the most complex files on the office network, local USB drives and from remote locations.

### Solution

- HP Designjet 44-in Z5400 PostScript® ePrinter with multi-roll capacity offering interruption-free, smart media switching for photo-quality graphics and accurate engineering drawings.
- Six-ink system with 300 ml high-capacity cartridges, that include three shades of black HP Photo Inks, for unattended, accurate drawings and more efficient ink usage.
- HP Instant Printing PRO for productivity-enhancing print job management.
- HP Large Format Printing materials for posters, presentations and banners that ensure high quality in every print

### Results

- High photo-quality prints for posters, wall decorations, indoor health and safety signs and event banners.
- A0/A1-size engineering drawings with sharper, neutral grey lines produced in under a minute, dry off the printer, are ready for construction site deadlines and customer meetings.
- Dual-roll capacity gives uninterrupted productivity for graphics and engineering drawings output, saving hours in a week and hundreds of meters of media in months.
- HP Instant Printing PRO's drag and drop file merging feature creates unique, application-free print jobs on the fly, saving time and optimizing media usage to boost productivity.
- Built-in features such as driverless printing of PostScript® files on a USB key or laptop, front panel previews and file management, speed up productivity and eliminate bottlenecks.
- HP large-format media achieves consistently reliable output for complete peace of mind in high pressure working environments.

Visit us on  
[hp.com/go/Designjet](http://hp.com/go/Designjet)

 [facebook.com/HPdesigners](https://facebook.com/HPdesigners)

 [twitter.com/hpgraphicarts](https://twitter.com/hpgraphicarts)

 [youtube.com/HPGraphicArts](https://youtube.com/HPGraphicArts)

© Copyright 2014 Hewlett-Packard Development Company, L.P. The information contained herein is subject to change without notice. The only warranties for HP products and services are set forth in the express warranty statements accompanying such products and services. Nothing herein should be construed as constituting an additional warranty. HP shall not be liable for technical or editorial errors or omissions contained herein.

This product meets ENERGY STAR requirements when appropriate coil components are used. Adobe Systems Incorporated assumes no responsibility or liability for any errors or inaccuracies that may appear in the informational content contained in this content.

4AA5-1664EEW, June 2014, Rev. 1

